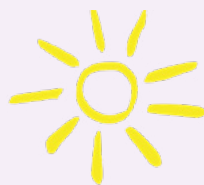




**Safeguarding
children is
everyone's
business**



RBSCP



ROCHDALE BOROUGH
SAFEGUARDING CHILDREN PARTNERSHIP

rochdalesafeguarding.com

Help prevent neglect

The Rochdale Borough Safeguarding Children Partnership (RBSCP) is the multi-agency partnership that exists to safeguard and promote the welfare of all children and young people in the local area.

We want to make sure that Rochdale is a safe place for all children and young people. We believe that safeguarding is everyone's business and together we all have a part to play in preventing, detecting and reporting abuse and neglect.

Child abuse happens when someone intentionally harms a child or young person. It can be physical, sexual, emotional or neglect; abuse can happen online or in person. Children and young people who have faced abuse or neglect may be afraid to tell people, especially if the abuser is someone close to them.

If you are worried about a child or young person it can be hard to know what to do. The NSPCC and our website have lots of information on the different types of child abuse and neglect, including how to spot the signs and details of support available.

If you are a young person who thinks they are being harmed or neglected, or know someone who is, it is important to let someone you trust know.

If you have any concerns that a child or young person is being abused or is at risk of abuse, call Rochdale Borough Council's children's social care team on **0300 303 0440** or outside of office hours on **0300 303 8875**.

If someone is in immediate danger, please contact the police on **999**.

For more information on safeguarding children and young people and for advice if you are worried about a child or young person, visit our website: rochdalesafeguarding.com

